

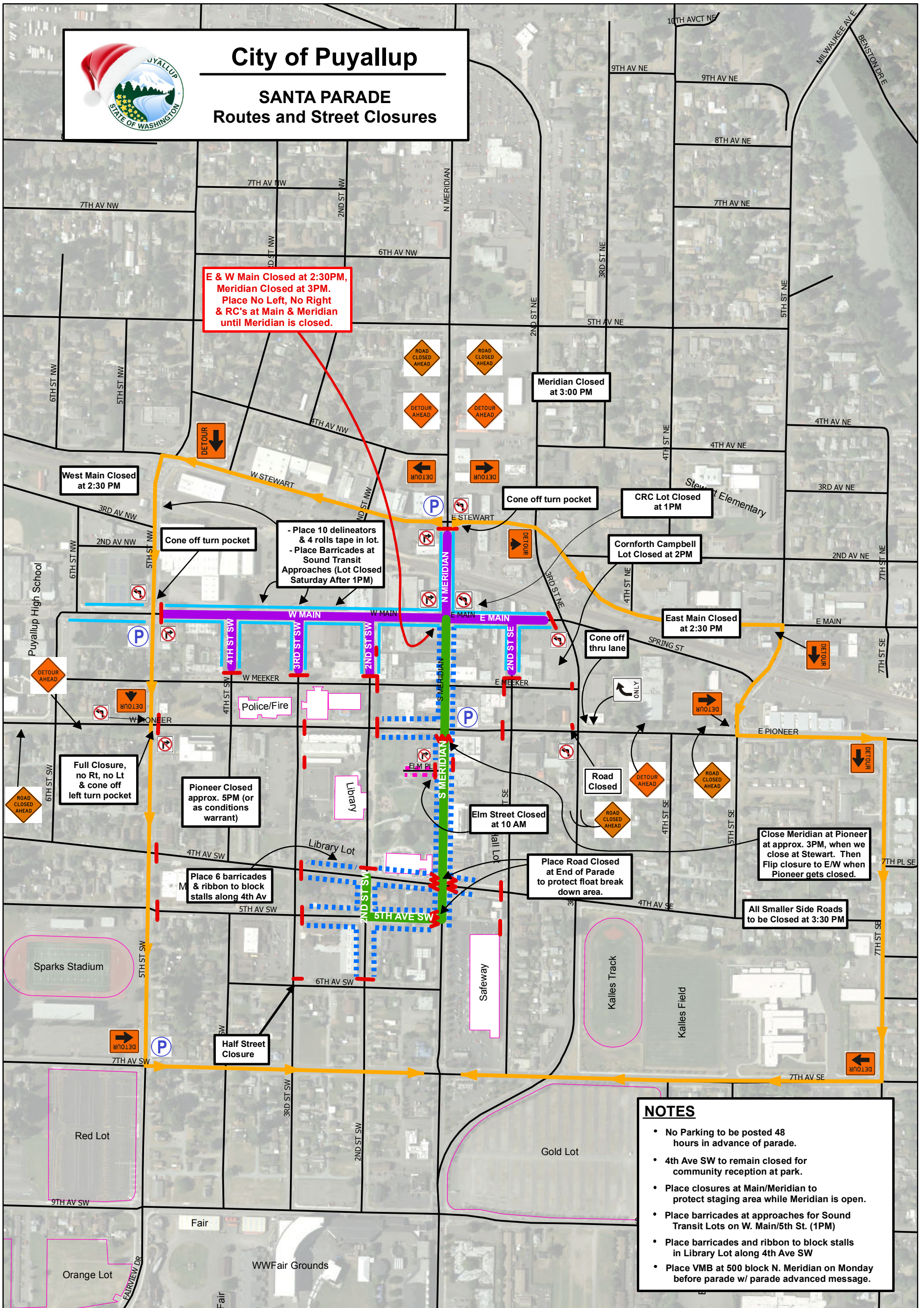


# City of Puyallup

## SANTA PARADE

### Routes and Street Closures

**E & W Main Closed at 2:30PM,  
Meridian Closed at 3PM.  
Place No Left, No Right  
& RC's at Main & Meridian  
until Meridian is closed.**



- NOTES**
- No Parking to be posted 48 hours in advance of parade.
  - 4th Ave SW to remain closed for community reception at park.
  - Place closures at Main/Meridian to protect staging area while Meridian is open.
  - Place barricades at approaches for Sound Transit Lots on W. Main/5th St. (1PM)
  - Place barricades and ribbon to block stalls in Library Lot along 4th Ave SW
  - Place VMB at 500 block N. Meridian on Monday before parade w/ parade advanced message.



**ROUTES**

- Detour Route
- Street Closure
- Parade Route
- Parade Staging

**NO PARKING**

- Elm St. Staging (10AM)
- Staging (2PM)
- Parade Route (3PM)

**NOTES**

- Parade Starts 5 PM
- Advanced Signage at Arterial & Collector Closures
- First Float Approx. 3:10PM
- Police Officer

